



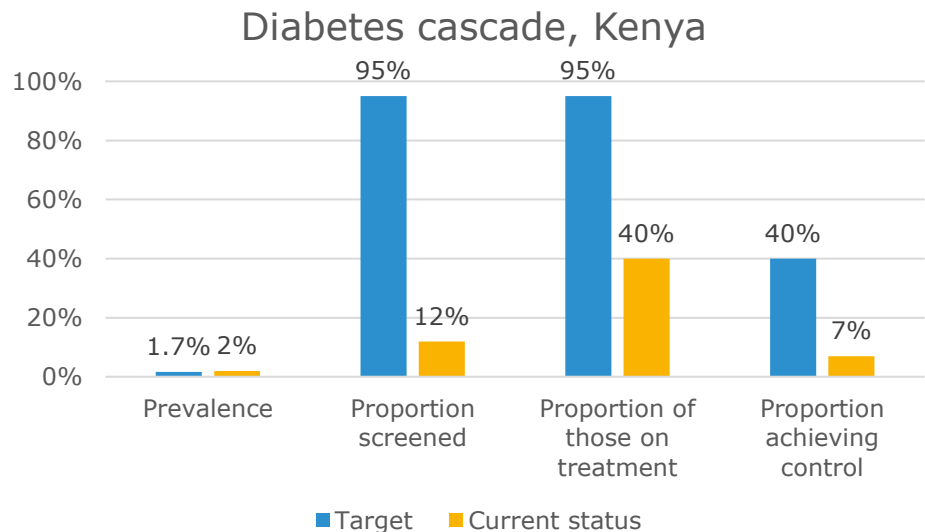
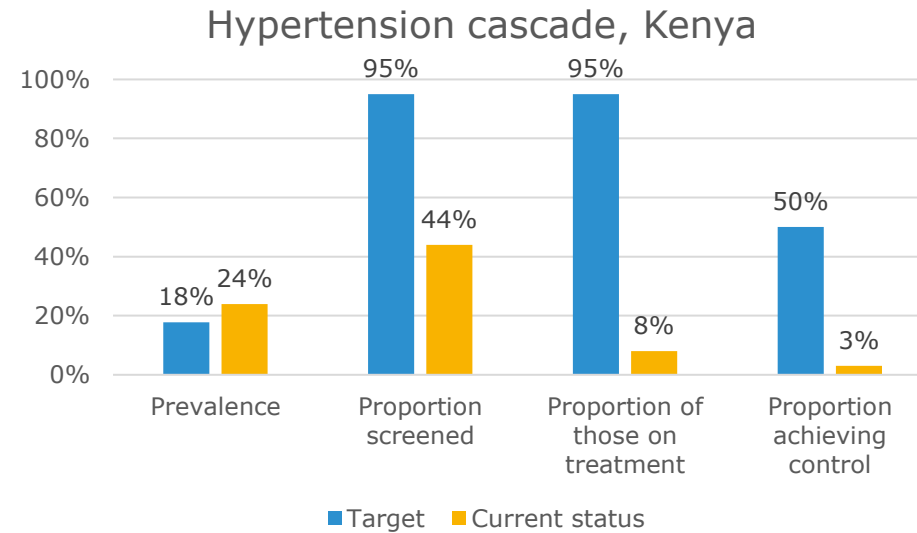
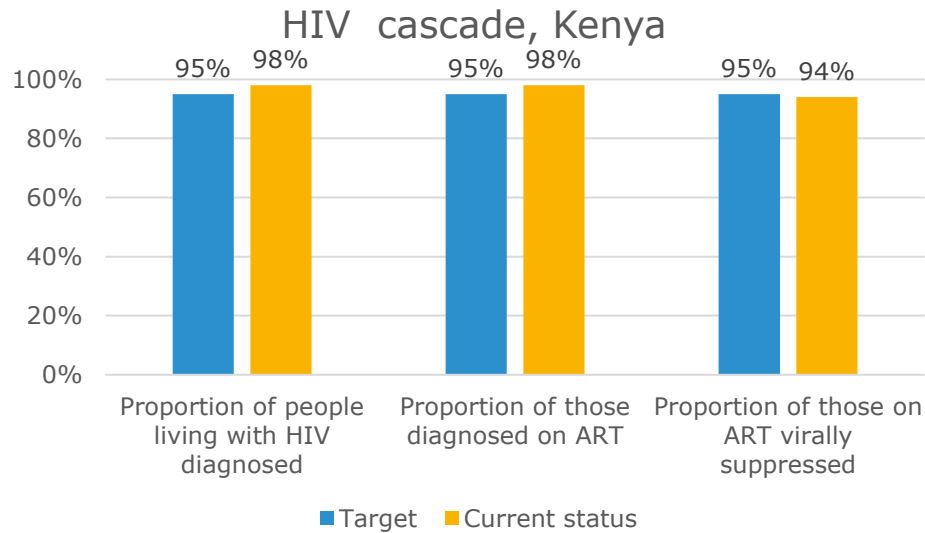
Dr Yvette Kisaka, Ministry of Health, Kenya

DSD beyond HIV treatment

**Unifying measures:
Adapting existing
M and E tools for the
integration of HIV
and NCDs in Kenya**

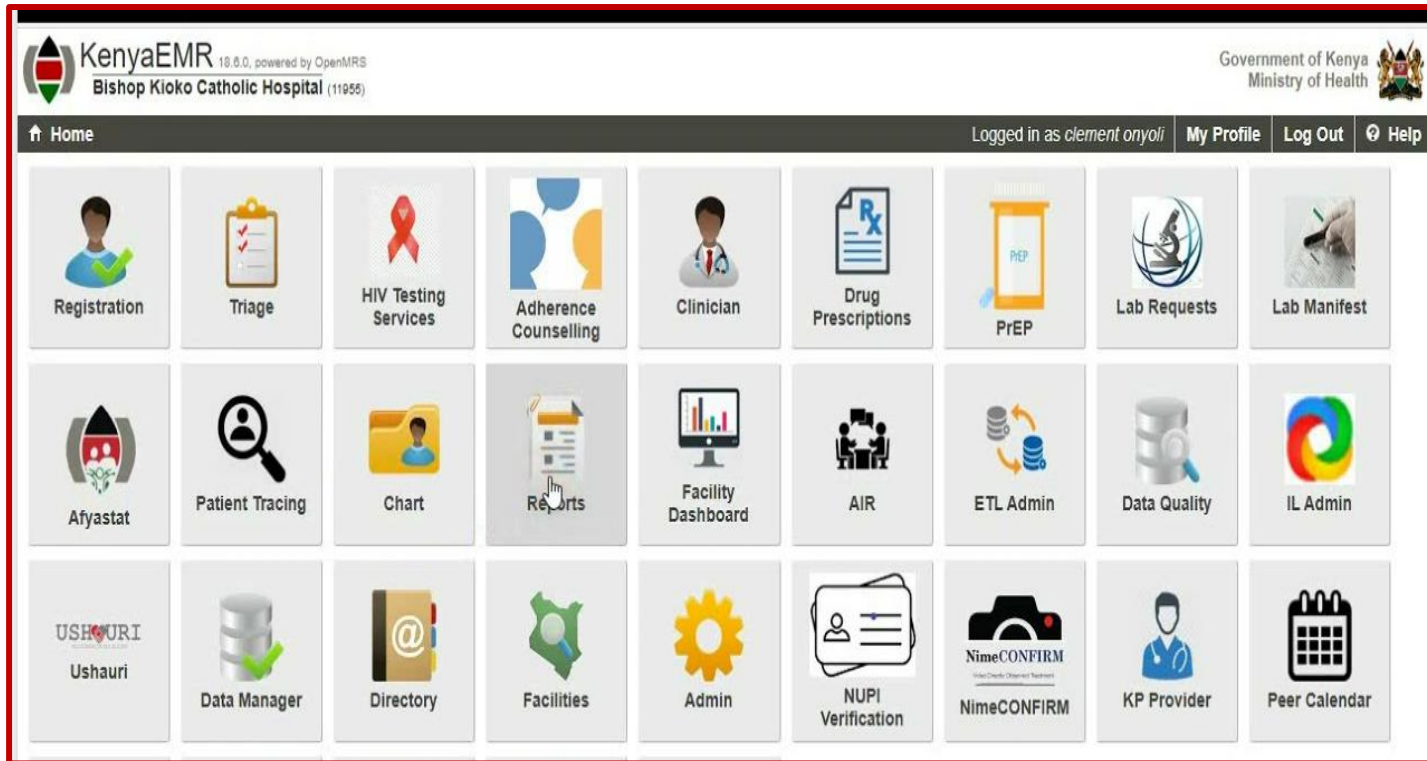


Global and Kenyan HIV, diabetes and hypertension targets and cascades



- Different indicators, target year 2025
- HIV indicators – UNAIDS 95-95-95 targets
- NCD indicators – NCD strategic plan 2021/22- 2025/26
- HIV indicators performing markedly better than NCD indicators


Existing M & E tools for HIV in Kenya



- HIV service points are largely paperless
- Utilize the Kenya EMR system
- Hosts longitudinal data for >94% of ART clients
- Seamless end-to-end connection in all service points

Existing M & E tools for HIV, hypertension and diabetes

Republic of Kenya



MINISTRY OF HEALTH

HYPERTENSION SCREENING REGISTER

Facility Name: _____


MFL Code: _____

County: _____

Sub County: _____

Opening Date: _____ Closing Date: _____

Republic of Kenya - Ministry of Health




MINISTRY OF HEALTH

Diabetes and Hypertension Comprehensive Care

Permanent Register MOH 270

County:	_____
Sub -County:	_____
Health Facility:	_____
Type:	_____
Start date:	_____

Republic of Kenya - Ministry of Health




MINISTRY OF HEALTH

Diabetes and Hypertension Comprehensive Care

Daily Register MOH 222

County:	_____
Sub -County:	_____
Health Facility:	_____
Type:	_____
Start date:	_____

MINISTRY OF HEALTH



MINISTRY OF HEALTH

**DIABETES AND HYPERTENSION
COMPREHENSIVE CARE**

MONTHLY SUMMARY FORM - MOH 740

- DM and Hypertension tools are Paper-based
- Disconnected interface between service points
- Cumbersome, data loss, time consuming

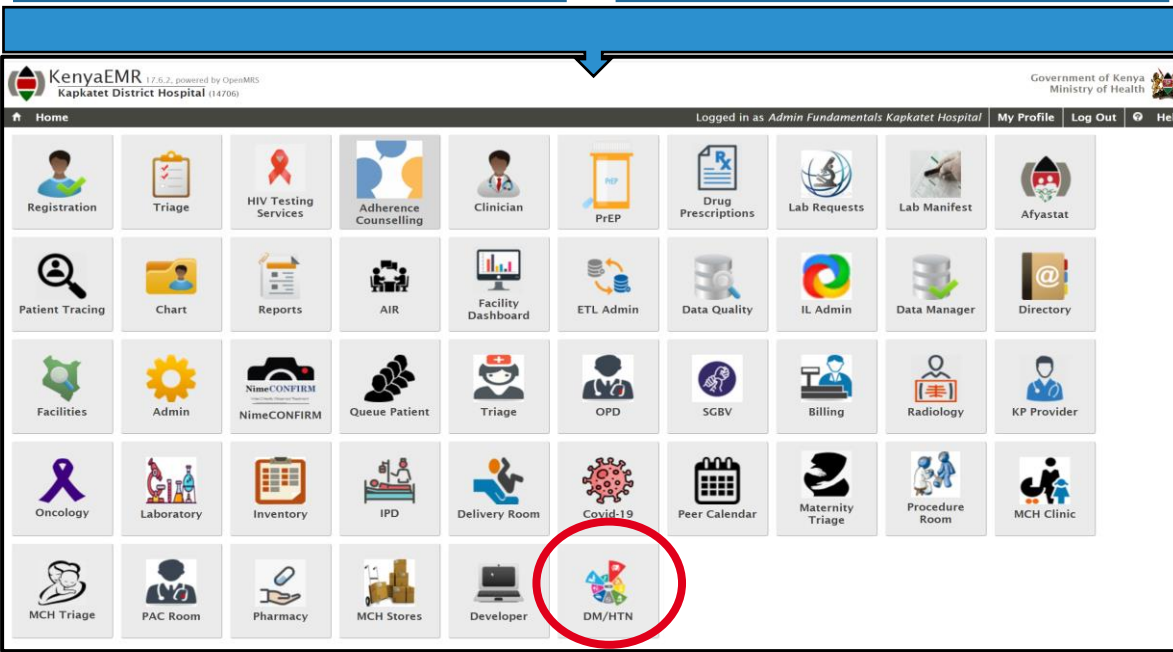
What needed to be changed and why?



Hypertension/DM



HIV



- Need for a one-stop shop - screen, link and provide care
- Focus on the person other than the condition
- Increasing co-morbidities amongst PLHIVs
- Maximize efficiencies – same patient, same HCWS, same health system,
- Integrated system: Provides a common interface for different forms and tools, time saving

<http://41.89.64.14:8080/openmrs/index.htm>

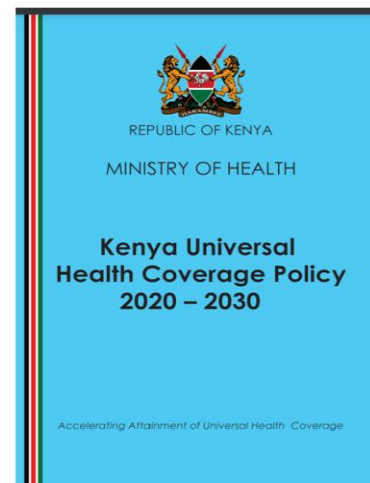
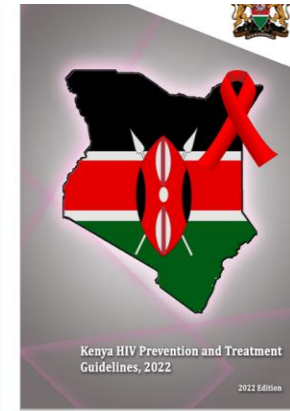
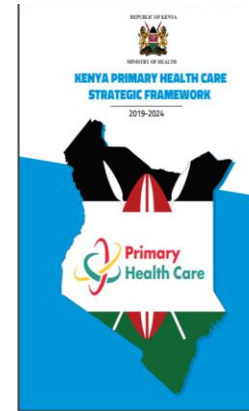
Username: Admin
Password: Admin 123

How were tools adapted to integrate hypertension and diabetes



AIDS 2024

Enabling policy and legal environment for HIV/NCD EMR integration

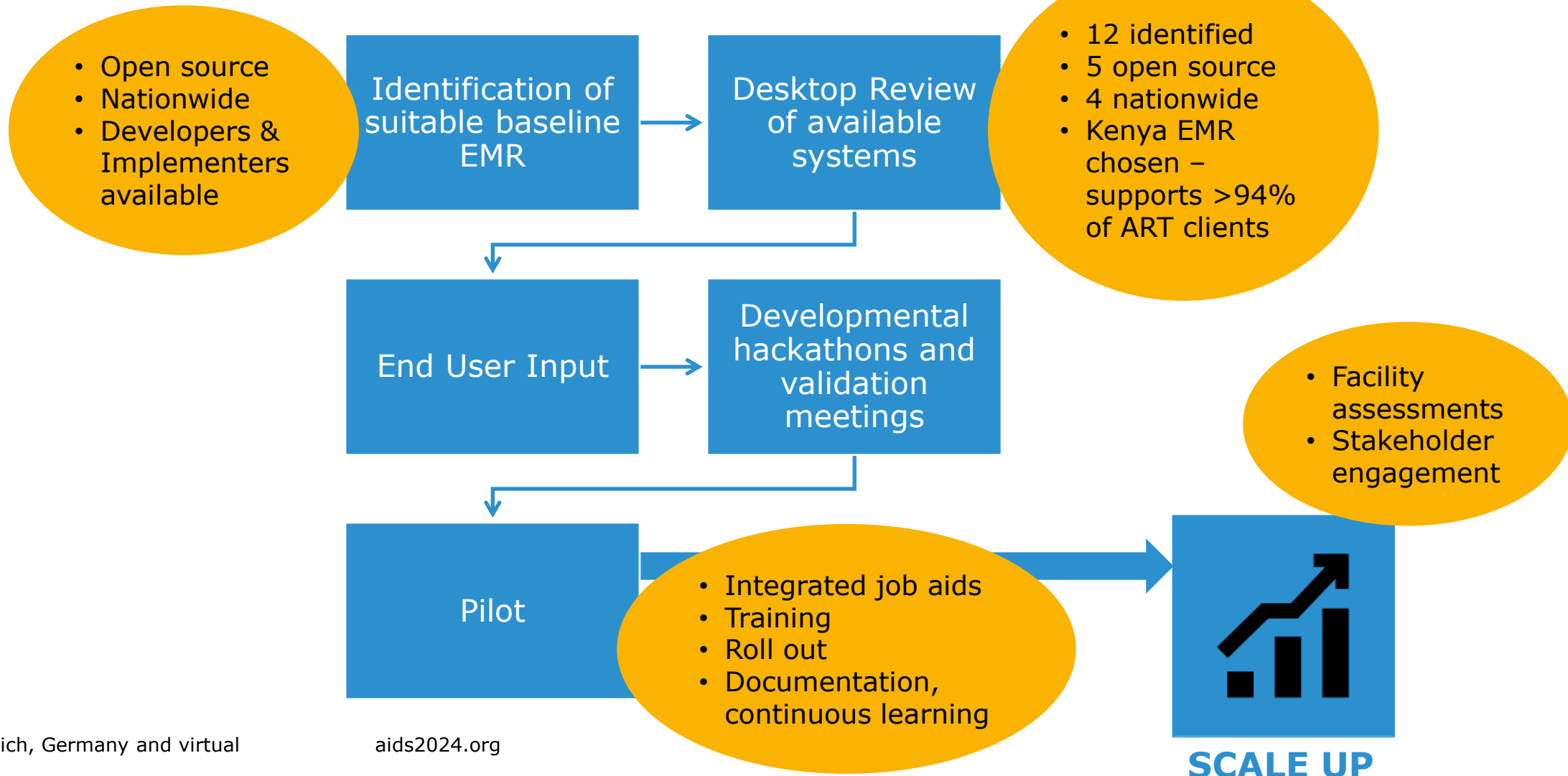


Integrated digital health systems among the four key pillars

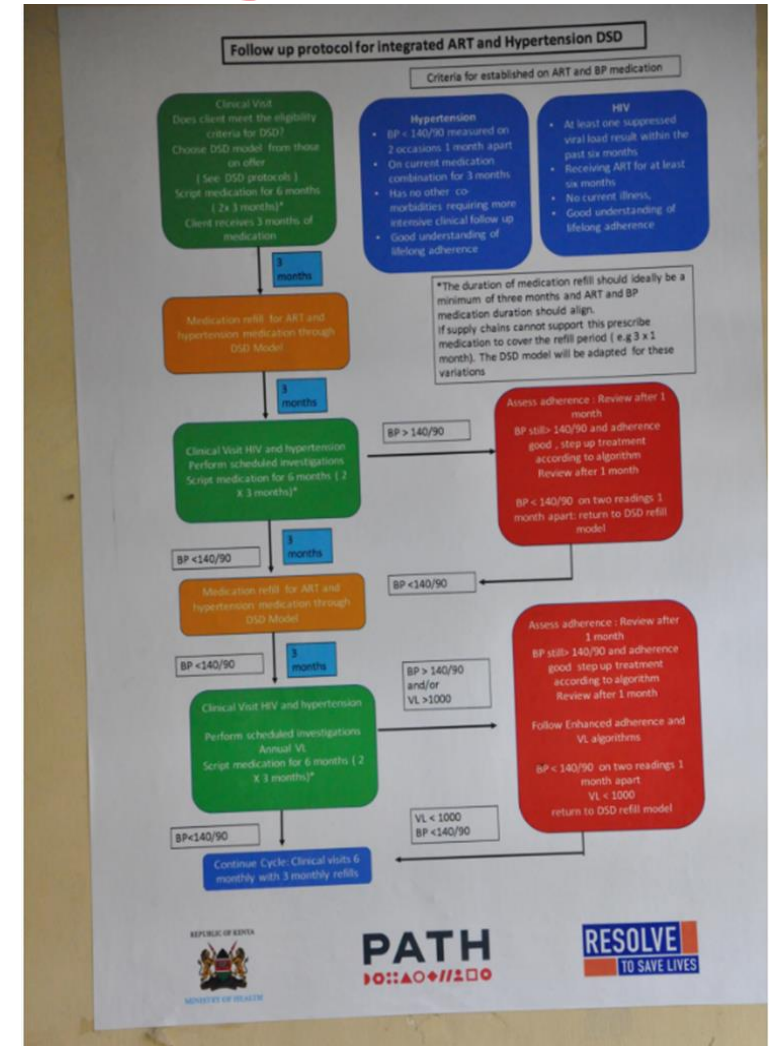
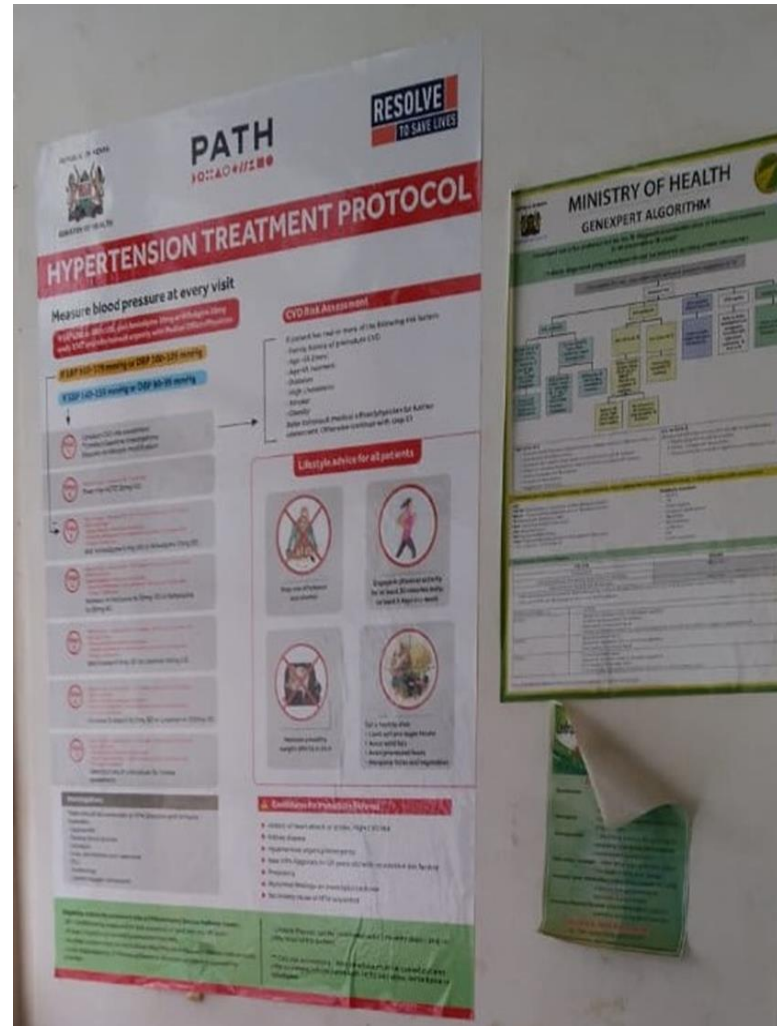
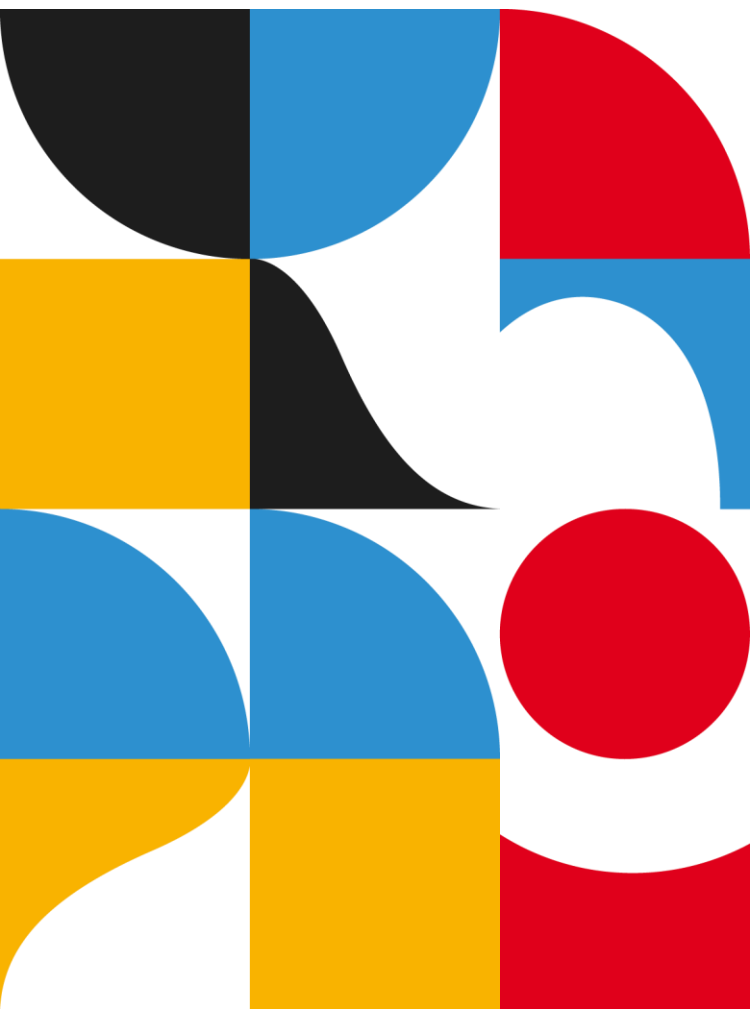
How tools adapted to integrate hypertension and diabetes



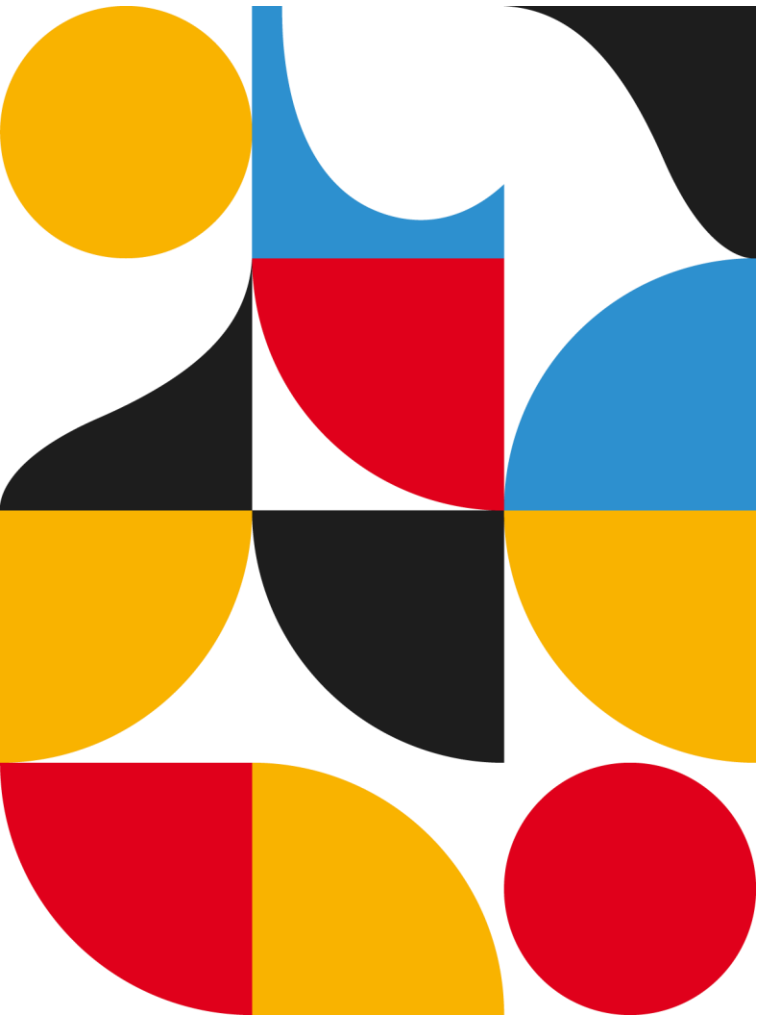
AIDS 2024



Simplified job aids for integrated training



Successes and challenges of the initial pilot using the adapted EMR



Successes

- Improved patient outcomes
- Early detection and intervention
- Personalized care treatment plans
- Enhanced efficiency and reduced costs
- Streamlined workflows, automated data entry
- Motivated workforce
- Commodity management
- Prototype to guide countrywide scale up

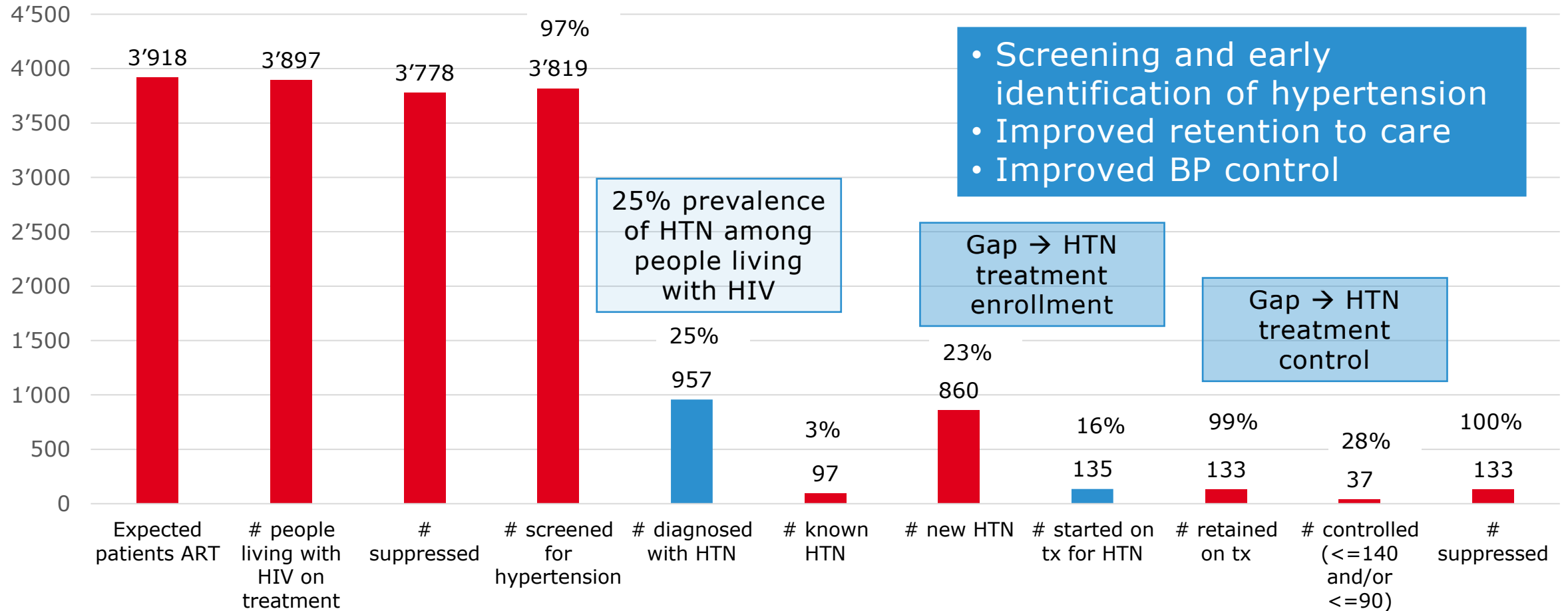
Challenges

- Heavy initial investment
 - System development
 - Healthcare worker training
 - Time investment
- Differences in patient pathways within facilities
- Fee-for-NCD services /Unavailability of HTN commodities – Impacts seamless use of EMR
- HCW attitude –increased workload

Outcomes



AIDS 2024



Plans for HTN and DM M & E beyond people living with HIV

- Scale up
 - In line with the UHC agenda, digital health is a key component
 - Health financing reforms necessitate digitisation of all health service points
- Development of chronic disease clinical models
 - One-stop shop for care regardless of the condition
 - **Facility assessment**, innovative support for capacity building, advocacy

FICAT (Facility integration capacity assessment tool)

- An ODK assessment tool
- Administered by a trained healthcare worker
- The server is hosted at the National HIV program.
- Assesses
 - Mode of integration
 - Human resource capacity
 - NCD screening
 - Access to laboratory tests, imaging support
 - Treatment
- So far: Assessment done for 213 facilities, 8/47 counties

<https://shorturl.at/ijmY9>

Lessons learned to share with other countries considering adaptation of existing HIV M & E tools

- Need for a supporting environment: Policy, technology, HIV/Hypertension integration
- National and sub-nation support for implementation
- Leveraging existing care investments – EMRs, data tools, HCWs, piloting sites
- People at the centre of interventions
- Adaptability, resilience, continuous learning



 **AIDS 2024**



Nyathina chak
achaka_

(My son, just
begin)

Acknowledgements

